



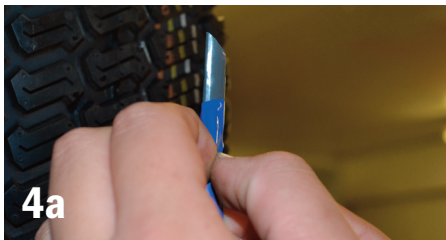
FIBRE-SEAL PUNCTURE REPAIR INSTRUCTIONS



1



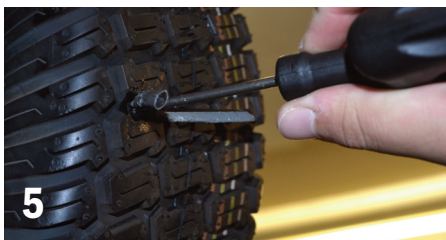
2/3



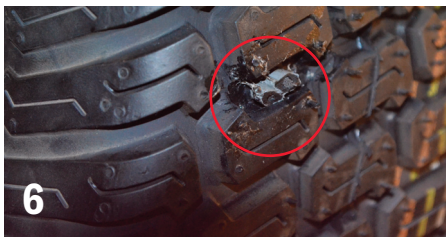
4a



4b



5



6

1 Inspection

Before repairing, mark injury then remove nail or other puncturing object from tyre. Ensure tyre is completely deflated before beginning puncture repair

2 Probing

Probe puncture with blunt awl or other hand probing tool to determine size and direction of puncture, making sure no foreign object is left in the injury.

3 Puncture preparation

Ream puncture channel with hand ream/awl tool in a clockwise direction to prepare injury for repair. Push tool firmly into the tyre to ensure the puncture injury is properly prepared

4 Prepare insert

Remove the blue plastic coating from the fibre seal insert and thread into the end load needle so that half is protruding each side of the needle. Coat both sides of insert in vulcanising cement

5 Fill injury

Push head of needle firmly into puncture injury; the fibre-seal insert will fold in half as it enters the injury. Push in until ends are only just showing then give the needle tool a sharp tug to remove from hole

6 Re-inflate tyre

Re-inflate tyre to required pressure. Ensure cement lid is firmly re-sealed to prevent drying out. Your puncture repair is now complete!



Place your order on
01243 558959
or email
sales@redstoneuk.com
visit
www.redstoneuk.com

